



ORIFICE

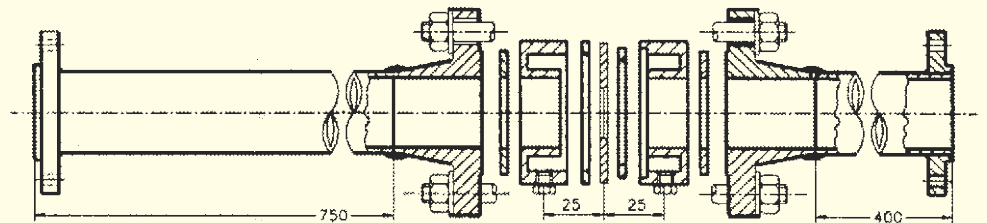
ASSEMBLIES
AND
ACCESORIES

FOR YOUR FLOW MEASUREMENT PROBLEMS

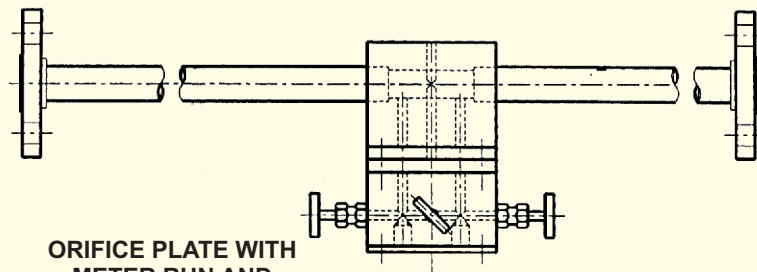
Despite various advances in flow measurement, Orifice Assembly remains one of the most used flow element.

This is because of -

- Accuracy within +/- 1%
- Robust & Simple Design
- Proven Design
- Suitable for Almost All Types of Fluids
- First Principle Device - Which never Fails
- Proven Solution for Flow Measurement
- Suitable for All Pipe Sizes from 1/2" to 36"
- Very nominal cost compared to other flow elements
- Zero Maintenance
- Because of proven data available,
no need of frequent calibration like other element



ORIFICE PLATE WITH FLANGE METER RUN



ORIFICE PLATE WITH
METER RUN AND
THREE WAY MANIFOLD



Tansa Equipments Pvt. Ltd.

Unit No. 35/36/41, Om Anand Industrial estate, M. S. Road, Raghunath Nagar, Thane - 400604 (Maharashtra) India.

Tel. : 2583 2323 , 65720669 Fax : 2582 3708,

E-mail : tansaindia@gmail.com / tansa@bom8.vsnl.net.in / tansa@mtnl.net.in

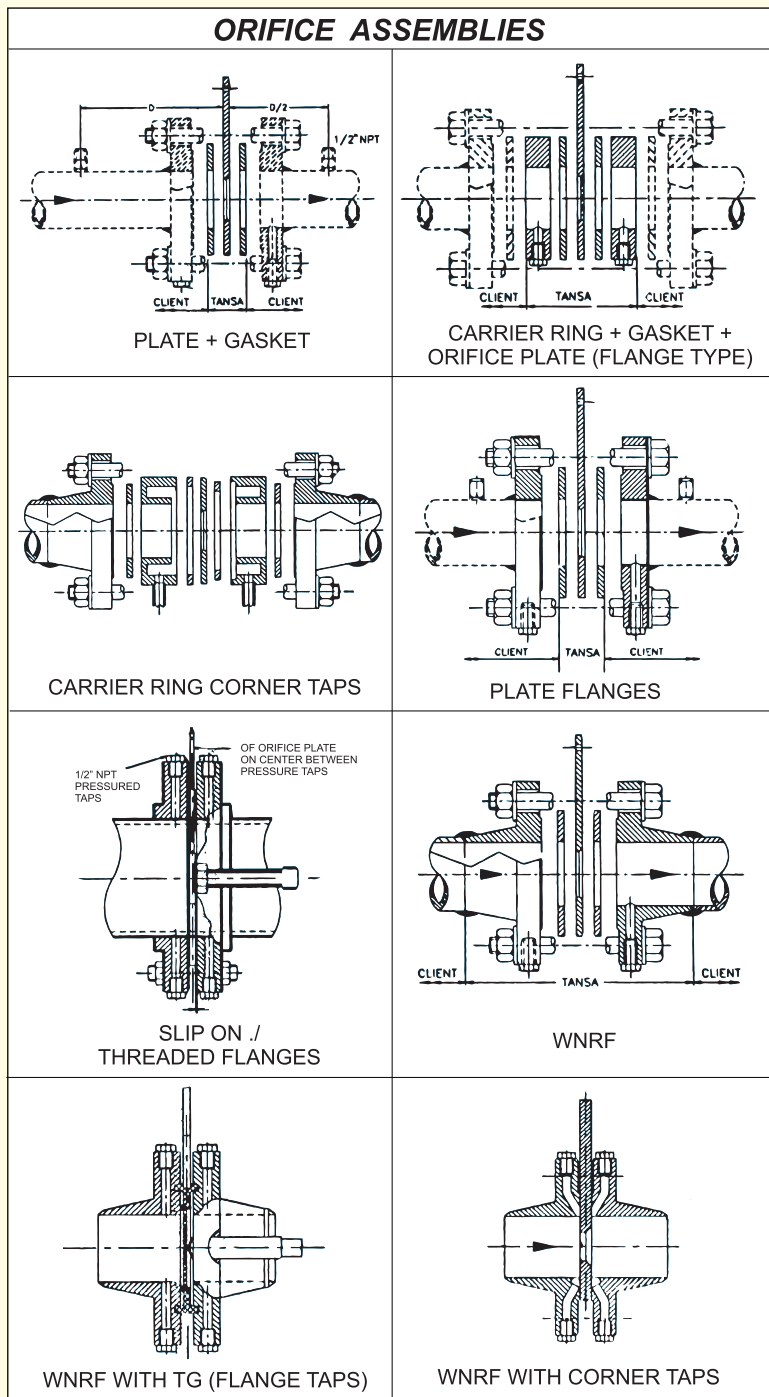
Website : www.tansaequipments.com, www.rotameters.co.in

We also manufacture Glass Tube, Purge type, Acrylic body, by - Pass Rotameters & Orifice Assy.



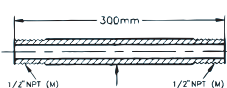
Technical Specifications :

- Sizes for Integral Design : 15, 20, 25, 40 mm
- Sizes for Flanged Design : 25,40,50,65,80,100,150 250 mm
- Sizes for DxD/2 : 250 900 mm
- Material -
Flanges & Carrier Ring : A105 / SS304 / SS316 / SS316L / CS & Other materials on request
- Orifice Plate : SS304, SS316, SS316L, Hast C, Monel, PP, PVC, PTFE, Coated or Clad with PP / HDPE / PTFE
- Gasket : CAF / SS Spiral Wound + CAF / PTFE / PVC / Rubber, Other Material as per special request
- Stud / Nut : ASTM A 193 Gr B/ASTM A194 CI 2H A 193 B16/A 194 C14
- Jack Screw : CS (C-1038) or HT
- Standards Applicable :
Design - ISA RP 3.2 / DIN 1952 / BS 1042 - 1981 - 84
Bore Calculation : ISO 5167 / BS 1042 / RW Miller / L.K. SPINK / AGA - 3.7
- Flanges : ANSI B-16-36 / Or Equivalent
- Types : Square edge concentric, Quadrant edged, Conical entrance, Eccentric
- Pressure Toppings : For 1" to 16" - Flange Taps / Corner Taps. Above 16" - D x D/2

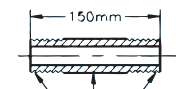


ACCESSORIES

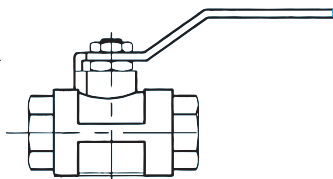
NIPPLES



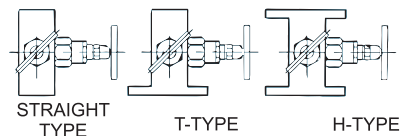
1/2" NB C.S.SCH. 40/80



1/2" NB C.S.SCH. 40/80



VALVE MANIFOLD



DATA REQUIRED FOR OFFER

- 1) Tag No.
- 2) Material of Construction
- 3) Line Size
- 4) Pipe ID
- 5) Allowable Pressure Drop
- 6) Types of Taps
- 7) Flange Size / Rating
- 8) Fluid
- 9) Fluid Density
- 10) Operating Pressure
- 11) Operating Temperature - C
- 12) Viscosity at C
- 13) Maximum Flow
- 14) Quantity



PTFE LINED
SS - ORIFICE
PLATES



Tansa Equipments Pvt. Ltd.

Unit No. 35/36/41, Om Anand Industrial estate, M. S. Road, Raghunath Nagar, Thane - 400604 (Maharashtra) India.
Tel. : 2583 2323 , 65720669 Fax : 2582 3708,
E-mail : tansaindia@gmail.com / tansa@bom8.vsnl.net.in / tansa@mtnl.net.in
Website : www.tansaequipments.com, www.rotameters.co.in

We also manufacture Glass Tube, Purge type, Acrylic body, by - Pass Rotameters & Orifice Assy.